

Summary of carboNZero certification:



Wellington Combined Taxis Limited

Year 3 of 3 year certificate period

Wellington Combined Taxis Limited meets the requirements of carboNZero^{Cert™} certification having measured its greenhouse gas emissions in accordance with the requirements of ISO 14064-1:2006 including additional life cycle emissions associated with the selected services, committed to managing and reducing its emissions and neutralised its remaining unavoidable emissions through the cancellation of an appropriate number of verified carbon credits in respect of its organisation including its taxi vehicle fleet and excluding Wellington Combined Shuttles.



Introduction¹ – Wellington Combined Taxis Ltd (trading as Wellington Combined Taxis) provide taxi transport services in Wellington city. They also provide tours of the Wellington, Wairarapa, and Kapiti Coast regions.

As described in their website², Wellington Combined Taxis Ltd (WCT) is a shareholder owned and operated company which was formed in 1993 with the amalgamation of the then two separately operated taxi companies - Wellington Taxis Coop Society and Black White & Grey Taxis. Wellington Combined Taxis currently operates 442 Business Class vehicles combined with 600 uniformed drivers. The company has a shareholder elected Board of Governors of 6 directors.

Wellington Combined Taxis have a commitment to sustainable business practice. This includes the introduction of hybrid vehicles to the fleet since June 2007. Wellington Combined Taxis have also committed to a rule whereby no petrol only vehicles are allowed to enter the fleet after June 2008. The majority of the Company's current and future vehicles are evaluated against rigid fuel efficiency guidelines. The taxi fleet is comprised of a range of cars, vans, and shuttles.

Boundary – Figure 1 shows the legal entities for Wellington Combined Taxis. These have been categorised into trading and non-trading companies. Non-trading companies have their names registered only, with no activities associated with them and therefore no emissions sources applicable. For Black White and Grey Cabs Ltd, this is the previous name used before changing to Wellington Combined Taxis Ltd. Items in green have been included in the emissions inventory whilst items in yellow have been excluded.

For the trading companies, Combined Finance Ltd is associated with Chit Factoring, whilst Wellington Combined Properties is associated with three buildings, all of which are joined together. Wellington Combined Taxis Ltd comprises of the core taxi service.

¹**Disclaimer:** This Disclosure Statement is a summary of the verified information considered for certification and the certification decision. It should not be taken to represent the full submission for certification. Whilst every effort has been made to ensure that the information in this Disclosure Statement is accurate and complete, carboNZero Holdings Ltd does not, to the maximum extent permitted by law, give any warranty or guarantee relating to the accuracy or reliability of the information.

² <http://www.taxis.co.nz/Home/UNEP.html> (accessed 22-8-11)

Summary of carbonZero certification:



Wellington Combined Taxis Limited

Year 3 of 3 year certificate period

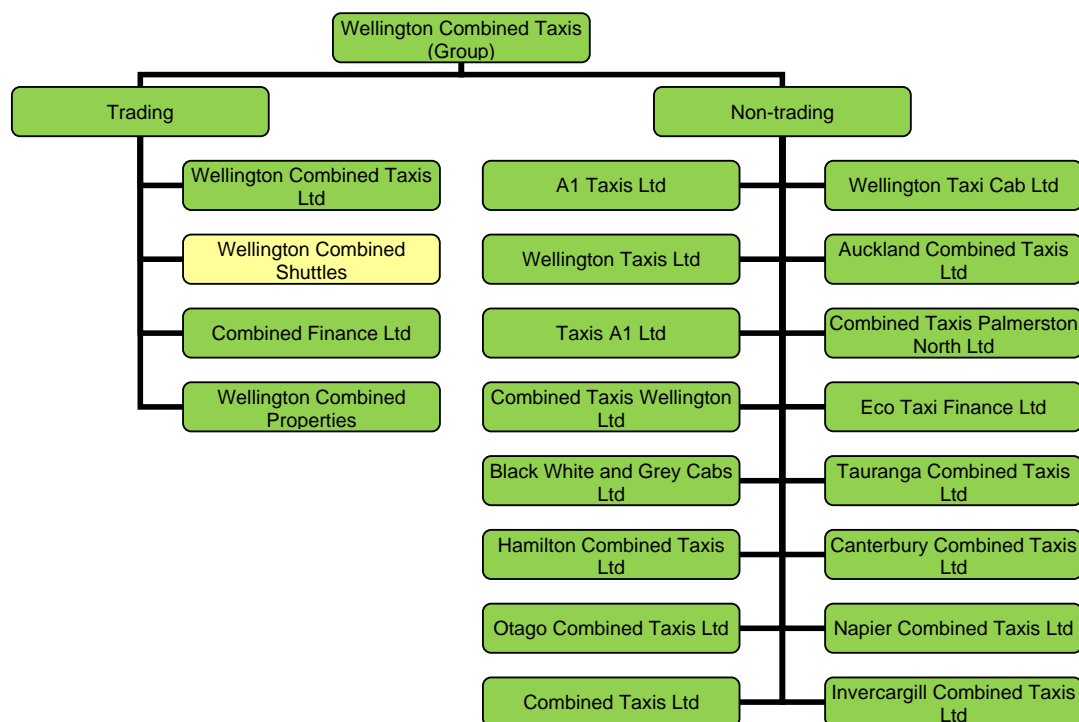


Figure 1: Organisational structure showing business units included and excluded.

Consolidation approach – The operational control consolidation approach has been used to account for operational emissions with reference to the methodology described in the GHG Protocol and ISO 14064-1 standards.

Base year – 1/7/2008 to 30/06/2009

Measurement period – 1/7/2011 to 30/06/2012

Emissions source inclusions – The operational GHG emissions for the organisation by emissions source are shown in Figure 2 below.

Summary of carbonZero certification:



Wellington Combined Taxis Limited

Year 3 of 3 year certificate period

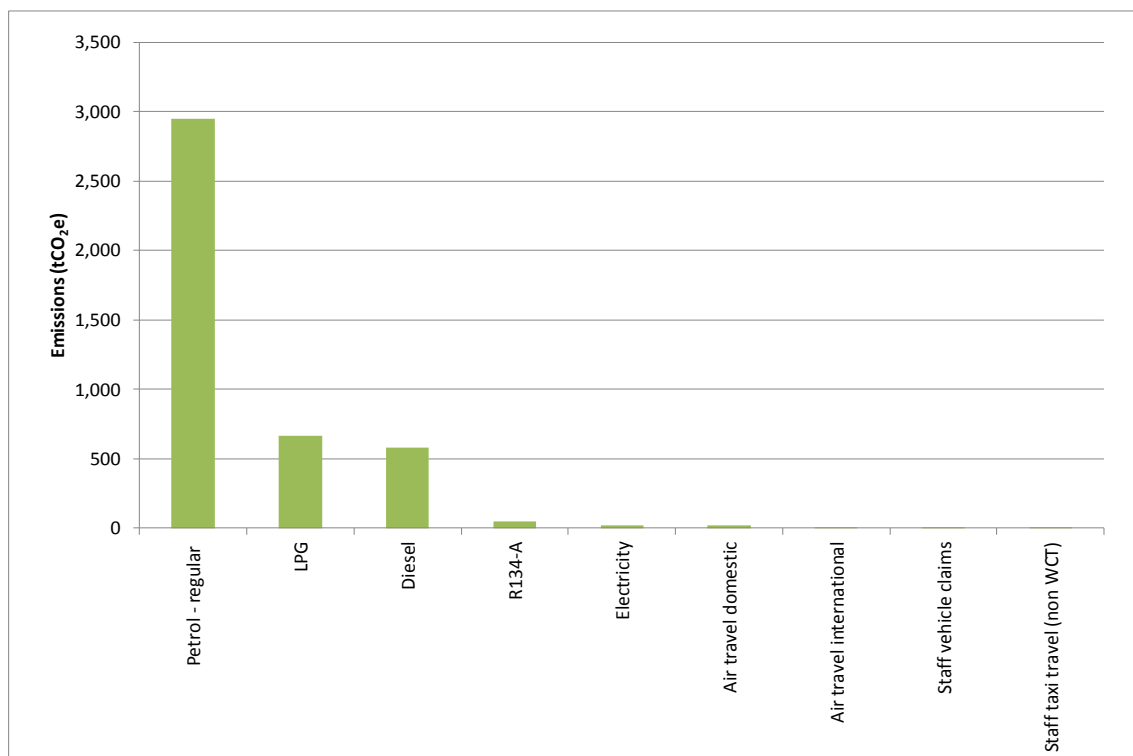


Figure 2: GHG emissions by emissions source.

Emissions as tonnes of carbon dioxide equivalents (tCO₂e) for this period were:

Emissions summary by scopes		Units
Scope 1 total	4249.18	tCO ₂ e
Scope 2 total	21.48	tCO ₂ e
Scope 3 total	24.28	tCO ₂ e
Mandatory scope 3	24.28	tCO ₂ e
Additional scope 3		tCO ₂ e
One-time scope 3		tCO ₂ e
Total inventory:	4294.95	tCO ₂ e

Emissions source exclusions – the following emissions sources were excluded as the amount of emissions associated with these was considered to be insignificant in proportion to the total direct GHG emissions profile, and/or there was insufficient data available to perform emissions calculations:

- Electricity for offsite/contracted vehicle grooming
- Vehicle maintenance services
- Office waste to landfill
- Electricity from sub-leased buildings

Summary of carboNZero certification:



Wellington Combined Taxis Limited

Year 3 of 3 year certificate period

Emissions reduction commitments – A GHG emissions management plan and reduction targets have been developed. Some projects in this plan include:

- Maintaining a vehicle requirement rule to ensure low emissions intensity vehicles are entering the fleet.
- Providing fuel efficient driving practices information and/or training for all drivers

Wellington Combined Taxis has an overall target to reduce emissions per km travelled by at least 3% per annum.

Emissions reduction report against last year's plan – Emissions decreased by 66 grams/km travelled (23%), when compared to base year

Offset – 4295 WINDFARM (India 2.225MW Windfarm) credits, serial numbers 902715-907009, have been cancelled on the carboNZero register and will be cancelled (or equivalent) on the relevant external registry within one month of certification.

Verified by – carboNZero Holdings Limited

Data quality score – Good

Threshold of materiality – Excluded emissions do not exceed 5% of the total footprint within the organisation boundary stated.

Level of assurance – Reasonable for organisation, Limited for service

Certification status – carboNZero certified organisation

Certificate number – 2010098J, Year 3 of 3 year certificate period

Valid until – 31 October 2013